



## ERSA IR/PL 550

The Best Selling Rework System

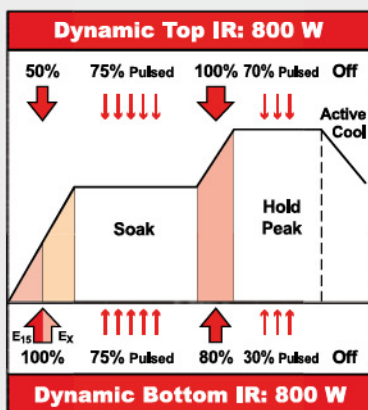
The IR/PL 550 is one of the best selling and most widespread rework systems in the world and offers the best cost/performance ratio. This system is designed for small to medium size PCBs and has proven itself to be the "Workhorse" in our rework product line. The IR/PL 550 is a unit which offers the greatest flexibility for operators to best interact with their system in order to handle the most complex SMT and THT rework applications.

The IR Rework system is broken down into four basic operational modules:

- I. **IR 550** Selective Reflow module
- II. **RPC 550** Reflow Process Camera module
- III. **PL 550** Precision Placement module
- IV. **IRSoft** Software module (see pages 16 & 17)

### Recommended Accessories:

It is recommended to purchase the Process Cooling Fan (p. 21) with the IR 550. When the IR 550 is not used in combination with the PL 550, it is highly recommended to purchase the the X-Y Table (p. 23) and the RPC 500 (p. 13). Additionally, it is helpful to purchase the Rework Starter Kit (p. 21). Special desoldering tools, such as the Chip Tool for small SMD removal and the X-Tool for TH desoldering can be connected to the solder station integrated into this system. For ordering details, please refer to the ERSA Tools catalogue. A complete listing of all rework accessories can be found on pages 20 - 23.



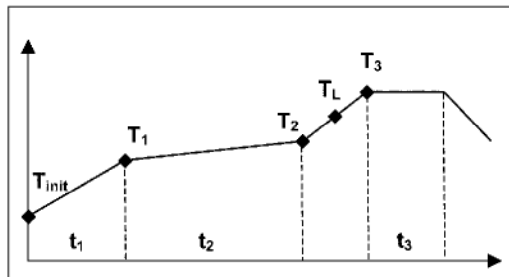


SMT Vision Award:  
Best New Rework Product,  
APEX, USA, 2002



# ERSA IR 550

The Best made even Better!



The IR 550 plus now affords greater profile flexibility with a flat peak

The IR 550 is the “Best Seller” in the ERSA rework line with thousands systems sold. This module uses DynamicIR heating technology for fully automatic dynamic control of the top (800 W / 60 mm x 60 mm) and bottom (800 W / 135 mm x 260 mm) IR heaters. Depending on board size, thermal mass of the substrate, and component size, the DynamicIR heaters (total of 1,600 W) guarantee that the required heat energy is delivered at the precise time and location in order to ensure that the component exactly follows the prescribed temperature profile. Combined with the enhanced capability to run a flat peak, this revolutionary technology affords the lowest temperature deltas across the component, and greatly reduces PCB warpage.

## IR 550 Module Features:

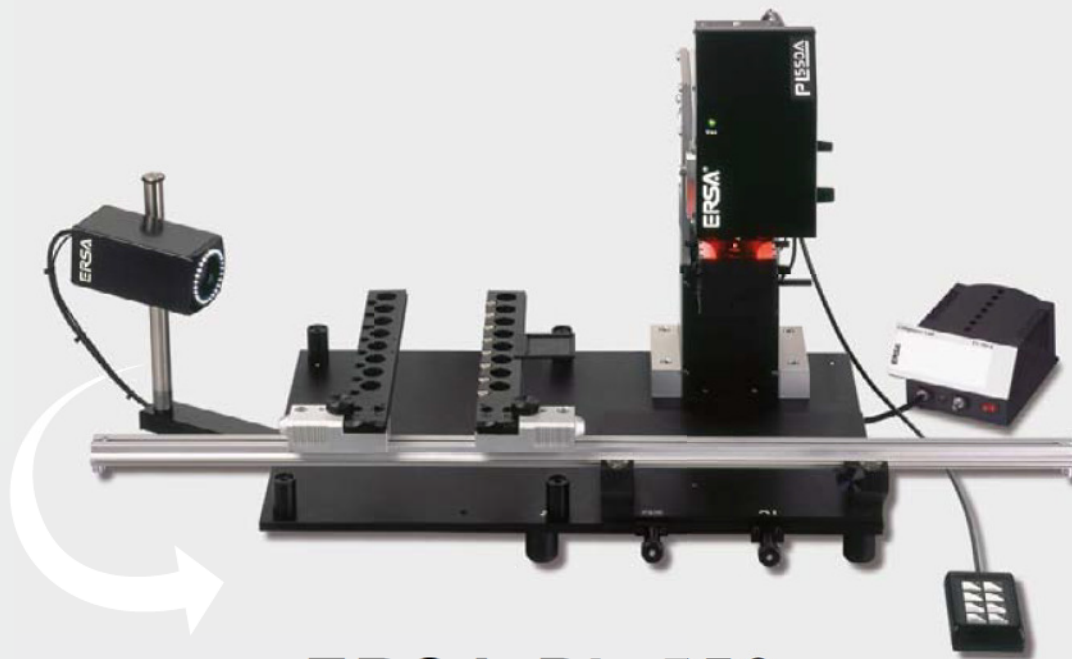
- ▾ DynamicIR & Closed Loop selective reflow process
- ▾ 2 channel temperature recording:  
1 IRS sensor, 1 AccuTC thermocouples (K-type)
- ▾ Laser pointer for component ID & PCB positioning
- ▾ Manual reflow head with auto component lift-off
- ▾ Integrated axial top cooling fan
- ▾ Integrated digital soldering station with soldering iron
- ▾ Remote control via mouse or PC using IRSofT

## Ordering information:

0IR550A     **Rework System IR 550 (without X-Y PCB table)**  
(incl. IRSofT, 1 x AccuTC and soldering station)

0IR5500-01     **X-Y PCB Table** (p. 23) (not required with PL 550)

For best soldering results, ERSA provides the IR 550 since 03/08 with a stainless steel grid as standard bottom radiator cover. Please order material number 0IR5500-33 if for your application a heat resistant glass cover is required (p. 21).



## ERSA PL 550

Precision Placement System with Reflow Process Camera

The PL 550 includes the RPC 550 module. This system is both a proven precision placement system designed for the largest range of components and offers reflow process viewing. A pressure triggered component placement head drops off the component at the same contact pressure (1.5 N) as an in-line Pick & Place machine. This Auto Component drop-off guarantees safe and precise results. A high-resolution placement camera with motor zoom permits highly precise alignment of component connections to lands with up to 72 x enlargement. The excellent image quality is supported by a high-contrast, separately controlled 2 colour LED lighting system from two sides.

### Recommended Accessories:

It is recommended to purchase the Split Optic Kit (p. 21) as well as additional placement nozzles (p. 20).

The RPC 550 module is a part of the PL 550 and uses a new high-power (up to 72 x enlargement) motor zoom camera, a controllable LED ring lighting system, and an extremely robust, movable stand. The reflow process can be viewed real time from multiple angles and high magnification on even the smallest of components.

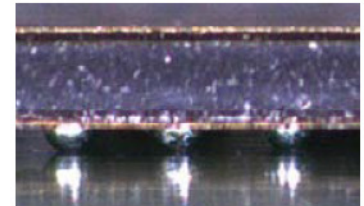
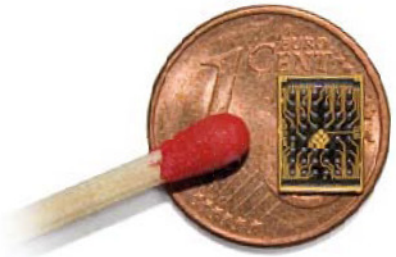
### PL 550 & RPC 550 Module Features:

- ▼ 2 each High-quality PAL CCD cameras (18 x optical + 4 x digital zoom)
- ▼ Manual component handling (from 1 x 1 mm to 40 x 40 mm in size)
- ▼ "Auto Component Drop-Off" at 1.5 N (up to +/- 0.010 mm accuracy)
- ▼ 40 x 40 mm beam split optic for large QFPs
- ▼ Motorized zoom and focus; one push auto focus
- ▼ Two side red / white LED illumination
- ▼ LED ring light; multiple angle, movable arm

### Ordering information:

0PL550A	<i>Precision Placement System with Reflow Process Camera</i>
0PL550AU	<i>Precision Placement System without Reflow Process Camera</i>
0VSRPC-UKIT2	<i>Reflow Process Camera Upgrade for 0PL550AU</i>





High magnification of Tessa CSP



ERSA Macro Zoom

# ERSA RPC 500

Stand Alone Reflow Process Camera

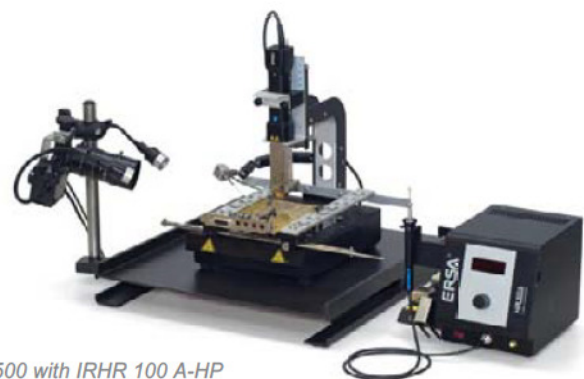
The new RPC 500 unit offers rework process viewing at the lowest cost possible. The 70 x optical magnification, Macro Zoom Lens delivers highest quality and high magnification images of the finest applications. Mounted on its bottom side, the 180° swivel arm carries the camera and provides maximum flexibility of process viewing angles. This unit can be used in combination with the IR 550, the HR 100, the IRHP 100 and any other hand tools.

## RPC 500 Module Features:

- ▾ High-quality CMOS USB 2.0 camera
- ▾ 70 x optical Macro Zoom Lens
- ▾ LED Dual Spot Lighting with flexible arms & variable intensity
- ▾ Free swivel arm, 180° stable stand
- ▾ For use with all bench top rework systems & tools



RPC 500 with IR 550



RPC 500 with IRHR 100 A-HP

## Ordering information:

0VSRPC500A-LE Stand alone Reflow Process Camera, complete